

  
**BirdLaser**



# *Birdlaser*

1000mW

All lasers except the stainless steel marine laser are equipped with AI and Track & Trace function will increase the efficiency. This function follow the birds in the area until they are gone.

All our units is specially treated for to avoid galvanic corrosion on housing and elctrical connections, internal moisture issues is also taken care of.

# Laser Range



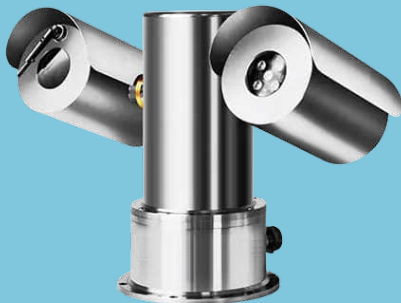
Birdlaser Portable is a 1000 mW laser with 2500 meter range and is very usefull for bird dispersal in small and big areas. It is very usefull for farmers with goose, crow,heron, cormorant,starling and eider duck problems.



Birdlaser Standard is a 1000 mW laser ment for agriculture, indoor, building complexes and general industry and is also very effective for repelling Eider ducks from mussle farms. Can cover large area with 3000 presets.

Made in seawater compatible aluminium.

Weight 10 kg.



Birdlaser Marine made in stainless steel 316L have long range and can withstand harsh environments. The PTZ is of high quality made in Italy, this will also be ATEX certified. Both windows is equipped with wipers.

Weight 28 kg.



Birdlaser Gyro AI for use on movable platforms in aquaculture and marine environment will keep even stubborn seagulls away. Pan and tilt speed can be adjusted for optimal conditions and laser can be switched on and off by bird detection.

Can be supplied with daylight camera and optional thermal camera in addition.

Weight 10 kg.





Birdlaser Off-Grid makes it possible to use laser in remote areas as mussel farming without grid connection.

A 1000 W wind power unit will keep the laser running for around 8 days without wind (based on 12 hour pr. day running time and two batteries).

Earth anchors and guy wires secures the wind power from powerful winds.



Birdlaser Artificial Intelligence assists in pointing the laser at detected birds until they leave the area.

Camera zoom is very important for bird detection at farthest distance, in aquaculture where there is a lot of disturbance an additional thermal camera might be necessary.



All units is supplied with high speed 802.11a with 3km range which gives 2 options, WiFi connection and cabled connection 4G and 5G is also possible

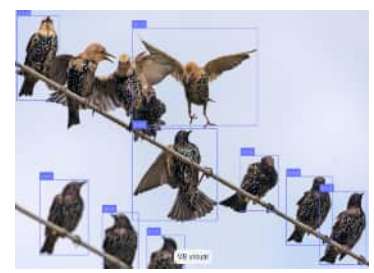
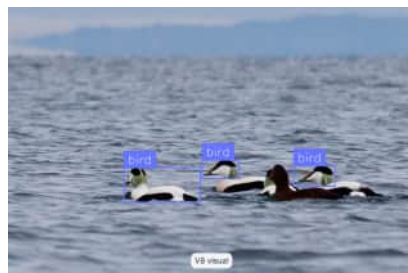
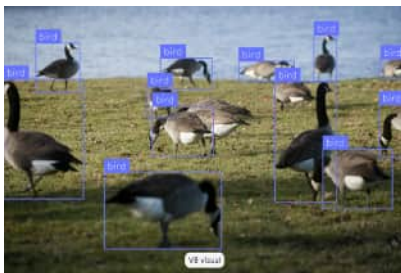
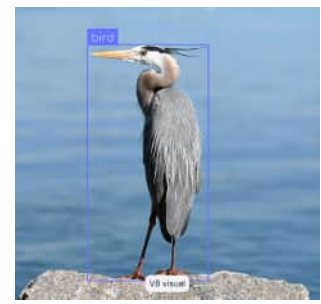
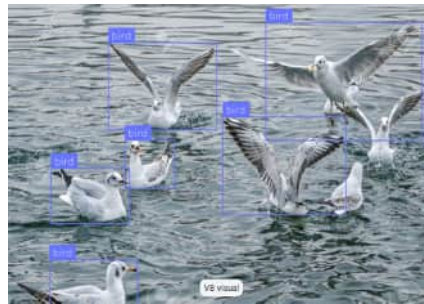


# Artificial Intelligence

## Created with Synthetic Data for Computer Vision

Track & Trace lasers with Artificial Intelligence is now available without investing in expensive programming and development. Our solution is a collection of AI modules with different types of detection like:

1. Bird detection
2. Vessels and poachers inside forbidden bondary





## CONTACT US

---

### VESTFLOW AS

Undheim  
Norway

+47 51 20 58 80

---

[post@vestflow.no](mailto:post@vestflow.no)

[www.vestflow.no](http://www.vestflow.no)

[facebook.com/vestflow](https://facebook.com/vestflow)